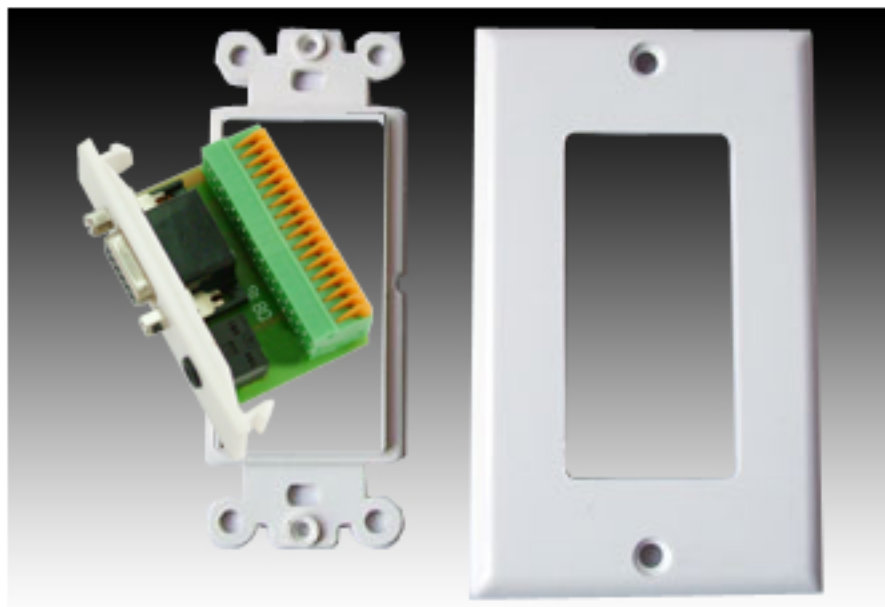


## EdisConnect Modular Cable Kit



### Key Features

Designed to be the ultimate connection system for Audio Visual, pro-audio, pro-video and IT installs in professional, office, classroom, home or full home cinema environments.

One of the most stylish options available but has greater choice, flexibility and is faster to install than almost all other products on the market.

Combines two modular families in one product, a highly efficient and fast snap-in module at the faceplate and a broad range of non-solder "screwless" terminal modules for cut cable installation.

True "snap-in mini plates" - for fixing pre-terminated cables direct to the faceplate.

Flexible ergonomic design, simple to install at minimal cost. Reduces installation time and effort. Sahara pre-terminated cables fit directly into the "snap-in mini plates" with virtually every type of audio, video or data connection.

Accept four modules in dual gang and two modules in single gang versions providing users with more connector combinations and larger choice and flexibility.

Dual and single gang versions fit other manufacturers backboxes, patresses, dado trunking, desk mounts and flooring systems



### Options :

Available with "screw less" terminals for virtually all types of AV, voice and data cables

Available with direct fix to "snap-in" modules for terminated cables with the advantage of

- faster and easier to install
- fewer install problems
- lower cost