

ULV COLD ELECTRIC SPRAYER

INSTRUCTION MANUAL



12 Liter

110V US

220V UK

220V EU

Dear Customer:

Please strictly follow the safety operation instructions and use the machine properly to improve the efficiency and to extend the service life of the machine.

You can contact with your local distributors or directly contact us for maintenance service or any other assistance.

CONTENT



1. Matters need attention 01

2. Technical parameters & Packing List 02

3. Basic work principles & Features 03

4. Operation instructions 04

5. Troubleshooting & Warranty Service..... 05

6. Applicable place & Related Products 06

- ① Before use, please check if the electric supply is 220V/50Hz (or 110V/ 50Hz for some area), and also make sure there is air filter cotton in the base air filter, not blocked.
- ② DO NOT overfill the solution tank above its Max. volume 11 Liter to prevent overflow. If the air filter cotton is wet, please wait until it gets dried before turn on.
- ③ To make sure the better spray effect, the motor speed is fixed, please do not detach or change the motor rotation. In case the spraying distance is close, adjust the control valve slightly. Only the water-soluble liquid can be used, make sure there is no impurities to keep the air filter unblocked.
- ④ Please power off when the following circumstances happened :
 - A. The machine exposed to the rain or gets wet;
 - B. The obvious change in the voice of motor;
 - C. Leaking;
 - D. The motor doesn’ t work when start or other dangerous situations.
- ⑤ Must wear disposable protective suit and protective mask while working.
- ⑥ During use, the temperature exceeds 50°C, please pay attention to prevent burns, and do not directly touch the engine with your hands.
- ⑦ After use, please clean the remain disinfectant with clean water, and turn on to spray 1-2 minutes to avoid liquid residues to corrode the nozzle. The location for storage should avoid any exposure to wet, sun, collision and easy to be reached by children.
- ⑧ Do not use the machine in the rain, forbid to plug or unplug with wet hands. The machine should not be stored near any flammable, explosive articles, or high temperature site. Do not pull the electric wire violently to avoid damage caused by sharp objects. It is not recommended to use more than 20 minutes each time.
- ⑨ In case any machine breakdowns, please cut off and call professional technician to check, or contact us timely. Do not disassemble the machine privately.

2. Technical Parameters & Packing List



Tank Capacity:	12 L	Spray Distance:	6-8 meters
Machine Size:	18(W)*45(D)*44(H)/CM	Power Cord Length:	5m
Material:	Plastic PE	Hose Length:	118cm
Power Supply:	AC220V or 110V	Packing Size:	46*21*47cm
Motor:	850 W	Net Weight:	4.3KGS
Droplet Size:	15-50µm (Adjustable)	Gross Weight:	5.2KGS
Spray Volume:	750ml/min	Charger Plug:	CN / UK / EU / US (customized available)



Item	Parts Name	QTY
1	Carton	1
2	Machine	1
3	Instruction Manual	1
4	Double Shoulder Strap	1

3. Basic work principles

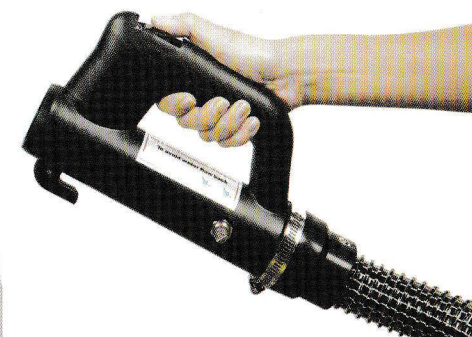
The rotation of the fan blades generate high-speed, this high speed rotating will cut the air. At the same time, the motor increase the pressure of the liquid and send them to the well-designed nozzle. The combined action of high-speed rotary cutting air and the special-structured nozzle result in the liquid splits into the small fog droplets.

3-1. Features

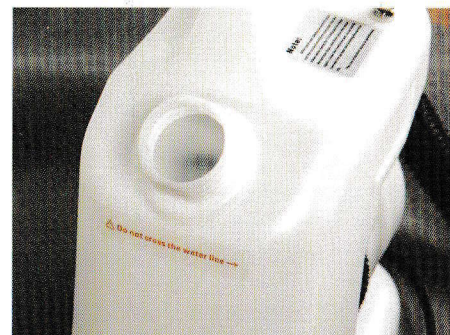
1. High efficiency, can spray 1000 square meters in only 10 minutes.
2. Centrifugal rotating sprayer, no blocking, droplet size is adjustable.
3. Meet all kinds of sanitary infection demands, including in poultry house.



Imported German hose, built-in steel ring



Anti-scald handle, more safer to hold



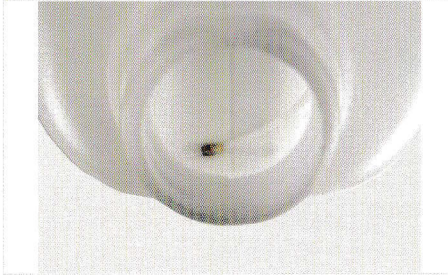
Brand new thick PE material, not easy to crack



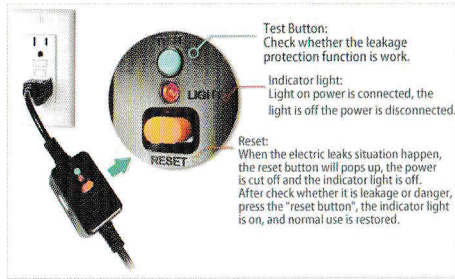
2mm nozzle, spray fine water mist

4. Operation Instructions

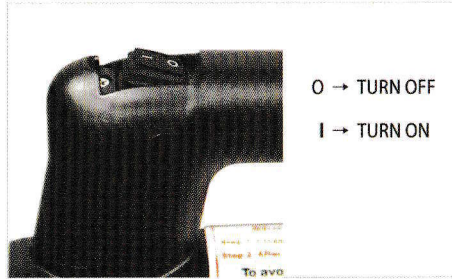
1. Fill the proportioned disinfectant and water to the tank, and the liquid need full covered the water suction pipe inside tank to make sure spraying smooth, then screw the lid tight. Pay attention to the label on the tank, the liquid in the water tank should not exceed the 11L scale line.



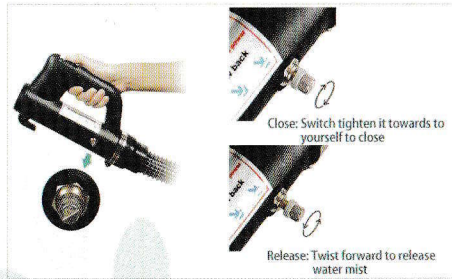
2. Plug in and connect the power



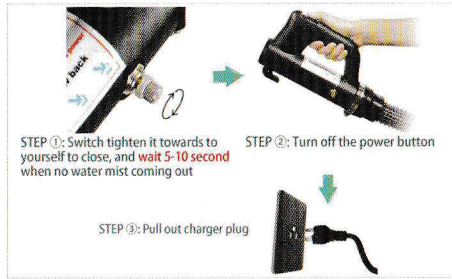
3. Press the power button on handle



4. Switch valve to release fogger



5. Right steps to turn off the machine



6. Cleaning machine

1. After each use, please completely empty out the tank to ensure there is no unused chemical left in the sprayer.
2. Fill the tank with clean water and run the machine for 1 - 2 minutes to thoroughly clean the machine.
3. Use of alcohol or flammable liquid is prohibited.

5. Troubleshooting

1. Not Running

- Causes**
- ① Plug loosened
 - ② Switch malfunction



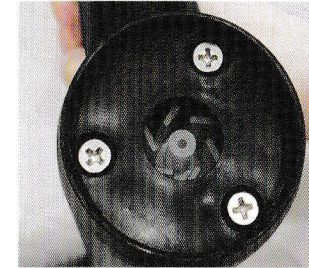
- Solution**
- ① Recheck charger plug
 - ② Recheck power button



2. Machine runs without spraying

- Cause**
- ① valve no release or spray nozzle blockage

- Solution**
- ① Do not use viscous disinfectant, use iron wire to clean the nozzle



3. Interrupted spraying or water leaking

- Cause**
- ① Water suction hose falls off or breakage

- Solution**
- ① Contact us immediately and send relevant pictures and videos so that we can provide corresponding solutions

5-1. Warranty service

One year warranty guarantee service for the main parts.

If the damage is caused by the below saying, our company will not be responsible:

1. The damages to the metal parts, hose and rubbers pads because of the using the liquids with high strength corrosion.
2. Thwe breakdowns or damages because privately changed the production structures or the production parts.
3. Not following the manual instruction during operation or maintenance.