

Solar Power Systems

Tile roof solar mounting system

Tile roof solar mounting system with great flexibility mainly used for residential roof, and use aluminum alloy rail with stainless steel roof hook to install, suitable for installing framed and frameless modules flushed to the pitched roof. Special extruded aluminum rail, pre-assembled clamps and varied roof hooks or brackets with tilt-in module ensure easy and quick installation.

Specification :

Wind Speed: < 60m/s Snow load: 1.4 KN/m² Standard: AS1170.2
Degree: Parallel to the roof Arrangement: Vertical or Horizontal
Warranty: 10 years

Installation manual :

1. Installing roof hook by tapping screws.
2. Installing rail by side of roof hook, hook's hole can adjust the height of rail.
3. Two rails supported each panel, fix panels by mid clamp and end clamp kit.



Tile roof mounting accessories :



Mounting rail

Rail, Extruded Aluminum Profile, A16005-T52560mm, 3405 and 4200mm are the standard size



Roof hook kit

Tile roof hook, Stainless Steel SUS304

Function:

Fix the rail to the rafter



End clamp - Mid clamp kit

A16005-T5 & Stainless Steel A2-70

Function:

Fix solar panel at the end

Roof hook :

Material	Stainless steel
	Tapping screw
	Socket bolt kit
Finish	N/A
Remark	The length of tile is long than normal



Material	Stainless steel
	Tapping screw
	Socket bolt kit
Finish	N/A
Remark	Used for another type rails

Also we can choose others according to other actual section of tile roof as bellow:



PT04



PT05



PT06



PT07



PT08

Metal roof solar mounting

With variety of different tin roof brackets, Solar tin roof mounting system can meet trapezoid/corrugated metal roof and standing seam roof demand with or without penetrating on the roof. Solar has the excellent engineer team and quality management system to provide the perfect service.

Specification :

Wind Speed: < 60m/s Snow load: 1.4 KN/m² Standard: AS1170.2
Degree: Parallel to the roof Arrangement: Vertical or Horizontal
Warranty: 10 years

Installation manual :

1. Fix L-feet by tapping screw, ensure waterproof by rubber plate.
2. Installing rail by side of L-feet, L-feet's hole can adjust the height of rail.
3. Two rails supported each panel, fix panels by mid clamp and end clamp kit.



Metal roof mounting accessories :



Mounting rail

Rail, Extruded Aluminum Profile, 6005-T5 2560mm, 3405 and 4200mm are the standard size



L-foot kit

6005-T5

Function:

Fix the rail to the beam



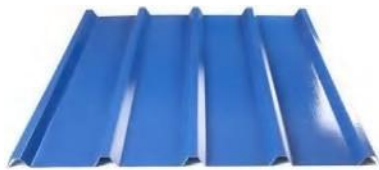
End clamp · Mid clamp kit

6005-T5 & Stainless Steel - 70

Function:

Fix solar panel at the end

Trapezoid roof bracket (Normal type) :



Material Stainless steel + Tapping screw + Socket bolt kit

Finish N/A

Remark By short Tapping screw to fix bracket



Corrugated metal roof bracket (Normal type) :



Material Stainless steel + hanger bolt + Socket bolt kit

Finish N/A

Remark Drilled into purlin of metal roof



Seam Clamp (Normal type) :



Material Aluminum alloy + Socket bolt kit

Finish N/A

Remark Seam clamp



Ground solar mounting system for 2 rows type

Solar Ground Mount is applicable to install the solar panel on a open field . Not only for residential , but also widely used for commercial project . Strong and powerful structure , nice appearance and lowest cost make this system quite popular all over the world .

Specification :

Wind Speed : <42m/s
Snow load : 1.4 KN/m²
Standard : AS1170.2
Degree : 10°-70°
Arrangement : Vertical
Warranty : 10 years

Installation manual :

1. Install posts first , and then install main beam and diagonal brace on 2 columns.
2. Install mounting rail upon main beam.
3. Install PV panels by mid clamp and end clamps.



Main parts show as bellow :

Mounting rail , Mainbeam



Diagonal brace
back support



Splice



Front, Rear Post



Connection



End clamp ,
Mid clamp kit

Project pics show as bellow :



Triangle mounting system

Adjustable Triangle Solar Racking System is specially designed for easy installation of solar panel to tilt a certain angle with flat roof. The mounting system design provides a strong and sturdy support for solar modules, it can be a fixed angle or adjustable such as 10~15 degree 15~30 degree and 30~60 degree for your requirement. Using our innovative Rail and pre-assembled components like tilt-in T module, clamp kit and highly pre-assembled tilt leg, This Metal Adjustable Tilt Solar Mounting makes the installation easy and quick to save your labor cost and time.

Specification :

Install site : Low profile Roof or flat roof

Tilt Angle : 10-60 degree

Building Height : 20m

Max Wind Speed : <60m/s

Snow Load : <1.4KN/m²

Standard : ASNZS 1170 and other

international Standard Material :

High Class Aluminum alloy Al6005-T5

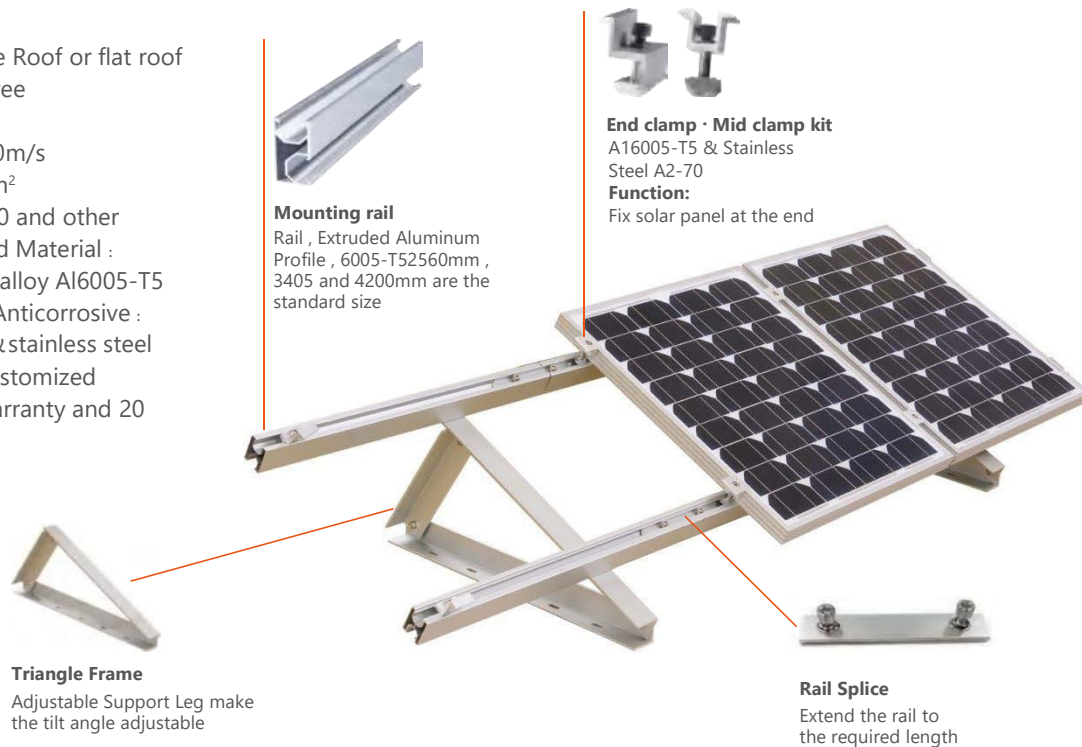
& Stainless steel 304 Anticorrosive :

Anodized aluminum & stainless steel

Color : Natural and Customized

Warranty : 10 years warranty and 20

years service life

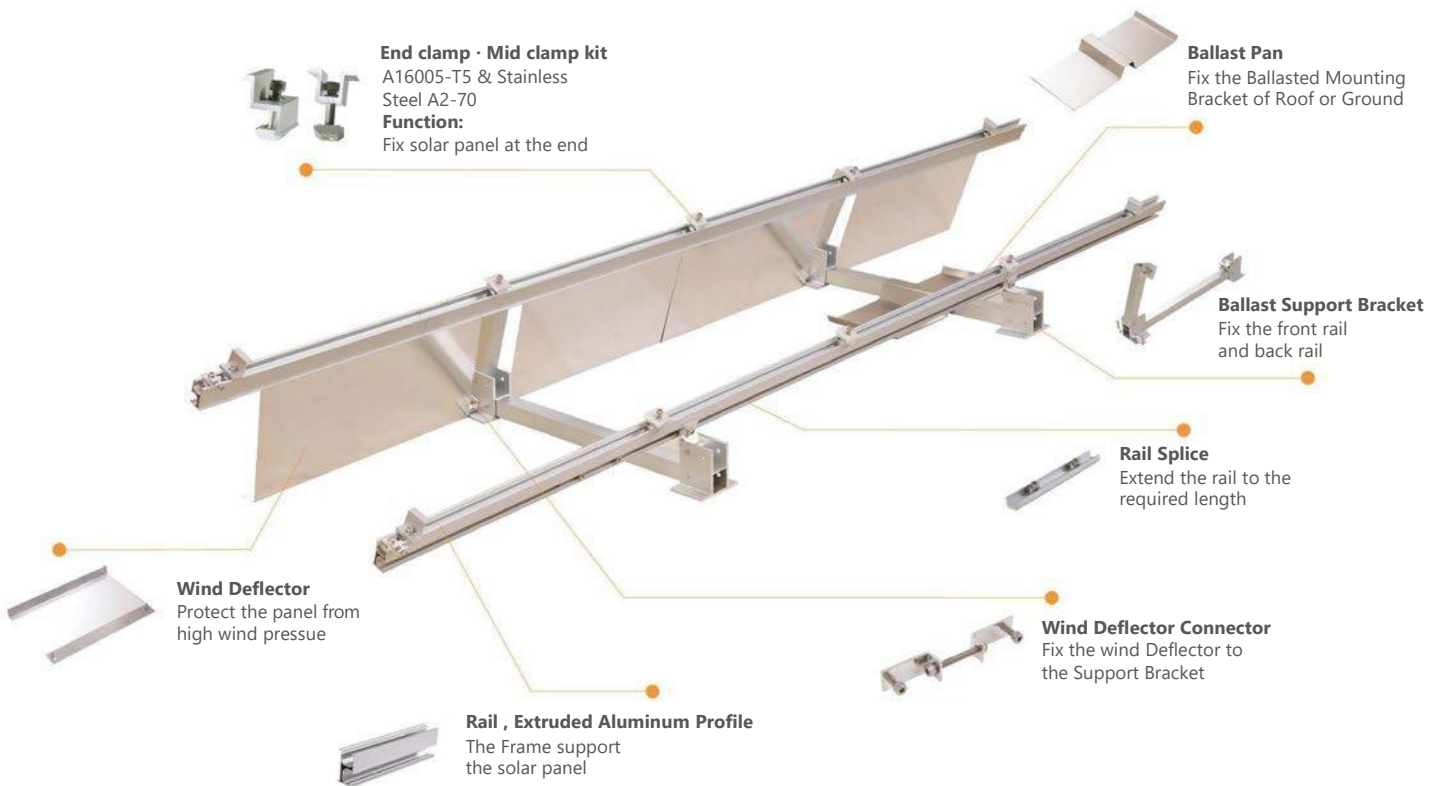


Project pics show as bellow :



Ballasted mounting system

solar mounting system is a highly engineered solution which can effectively reduce the influence of wind on the photovoltaic system. Also this one type can secure the array without damaging the flat roof , It is compatible with the usual framed modules and typically does not require roof penetrations. Made of light weight and strong aluminum construction , ballasted solution components are preassembled and precut to prevent corrosion and save your installation time and labor cost .



Project pics show as bellow :

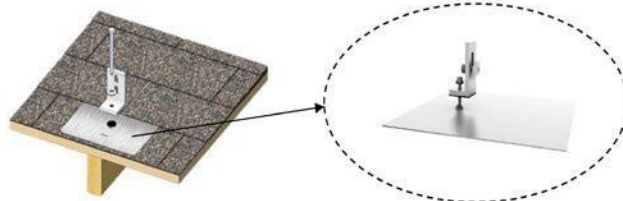




Asphalt shingle roof solar mounting system

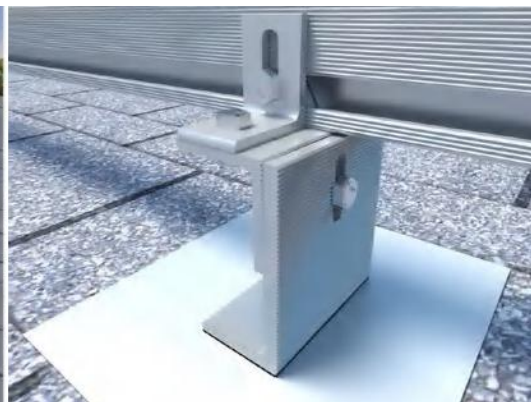
Asphalt shingle roof solar mounting system used for support solar panel on asphalt shingle roof without any degree. Just use simple tools will be fine to complete all accessories installation.

Main parts we use are aluminum alloy 6063 material, surface treat will be anodizing. All bolts pre-assembled will be stainless steel SUS304 material. Tapping screw which need to be drilled into asphalt shingle roof by L-feet holes, so we use by carbon steel material with hot dip galvanized surface treatment. All mounting structure has 10- year warranty and 25-year service life.



Asphalt roof solar bracekt show

Installation Site:



Project pics shown as bellow :



Mounting rail



End clamp · Mid clamp kit



Rail Splice Kit



L-feet Kit



Aluminum Insert Nut

Project pics shown as bellow :



Ground Screw structure

Ground Screw structure with features : convenient installation , low cost , suitable for large-scale photovoltaic power station .
Ground Screw drilling into the earth , make sure connection is firm , construction is convenient , easy to install bracket foot. The main structure is HDG steel , beautiful appearance , strong structure and reliable.

Install site : Ground

Installation Angle : customers' requirement

Max Wind Speed : <60m/s

Snow Load : <1.2KN/m2 Standard :

GB50009, DIN 1055 Material : Q235B

Warranty : 10 years warranty and 20 years service life



	001	002	003	004	005	006	007	008	009
Images									
Size	Ground screw we choose according to actual soil factors or customers' requirements.								
Finish	HDG	HDG	HDG	HDG	HDG	HDG	HDG	HDG	HDG
Remark	Normal size: $\Phi 76 \times 3 \times 1600\text{mm}/1800\text{mm}/2000\text{mm}$; Big blades or small blades; With flange or without flange.								

Project pics shown as below :



More videos on our Facebook page

Cable and Wiring

Connecting Cable

PVC connecting cable 4 mm² for connection of solar panels to inverters



Connectors for connecting Solar Panels to inverters

